



SPETS
TECHNO
EXPORT

FLOATING DOCK WITH 3,500 TONS LIFTING CAPACITY



MAIN FEATURES



The cost of the floating dock includes the design development, its approval by the Classification Society, supervision of the dock building by the Classification Society, and delivery EXW-Kherson (Incoterms)

DOCK TYPE	Non-self-propelled with power supply, single-pontoon U-shaped
DOCKING VESSEL WEIGHT	3500 t
CLASS	A1, Floating Dry Dock, UWILD
BODY MATERIAL	Marine heavy reinforced concrete based on sulphate-resisting Portland cement
SIDEWALL MATERIAL	Shipbuilding steel
PONTOON LENGTH	120 m
DOCK LENGTH WITH CRINOLINES	135 m
PONTOON WIDTH	29 m
WIDTH BETWEEN SIDEWALLS	23 m
DOCK HEIGHT TO TOP DECK	12,6 m
PONTOON HEIGHT IN THE CENTRELINE PLANE	3,4 m
DOCK LIGHT DISPLACEMENT	1,8 m
DOCK LOAD DISPLACEMENT (3,500 t)	3 m
DOCK MAXIMUM OPERATING DEPTH	11,6 m
DOCK CRANES:	
- MOBILE GANTRY CRANES	2x5 t
- FIXED DECK CRANES	3x5 t

ADVANTAGES

All developed designs are based on our reinforced concrete pontoons which are approved by the Classification Society


They are anti-corrosion

Unlike metal pontoons, they do not require maintenance

Environmentally friendly, enhanced strength

Quality control of each element, at each stage of building is carried out by means of laboratory tests

Economical in operation



The floating stability of the dock will meet the requirements of the Classification Society. In case of emergency flooding of any compartment, a dock with a ship in a good operating condition will remain afloat, with the positive floating stability

Also, the floating dock can be equipped with the state-of-the-art technology at all levels

DOCK ARCHITECTURE

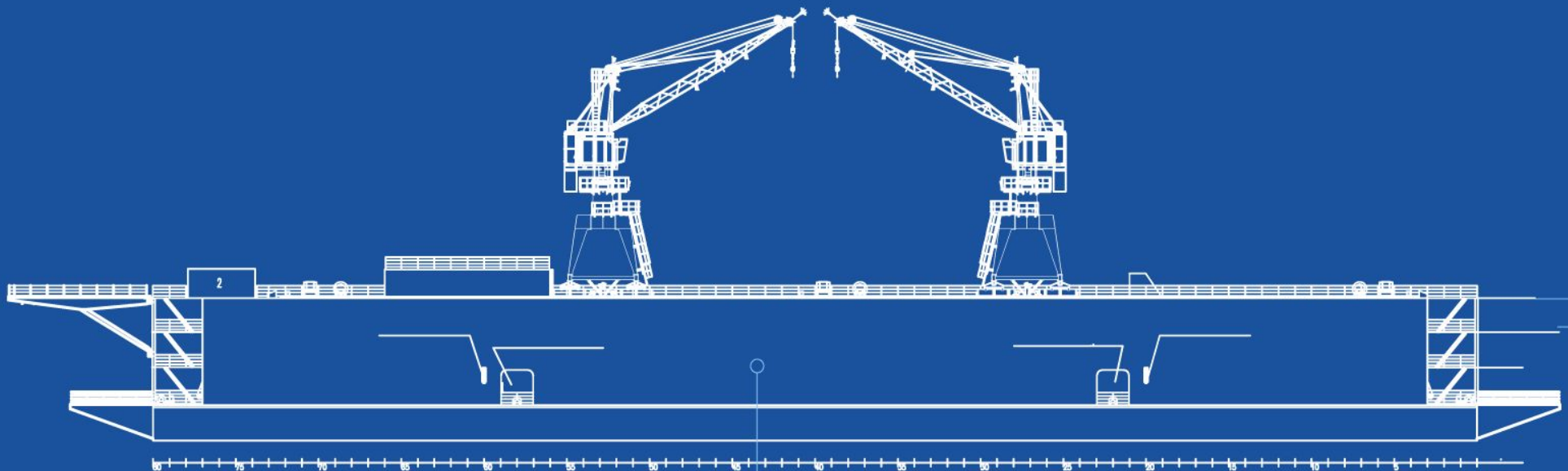
The bottom of the pontoon is not raised, the decks are horizontal, the pontoon deck has a slope from the diametrical plane to the side of 200 mm. The crinolines will be located in the bow and aft of the dock



DOCK ARCHITECTURE

RIGHT SIDEWALL ARRANGEMENT

On the top deck: central control station, container with emergency diesel generator, emergency switchboard room, carbon dioxide fire extinguishing station, companion to dry compartments



Below the safety deck: room of drain collecting tank in the dry compartment

On the safety deck: spare parts and utility storage, dockmaster's cabin, shower, toilet, main switchboard room, fresh water supply room, fan room, tween-decks

DOCK ARCHITECTURE

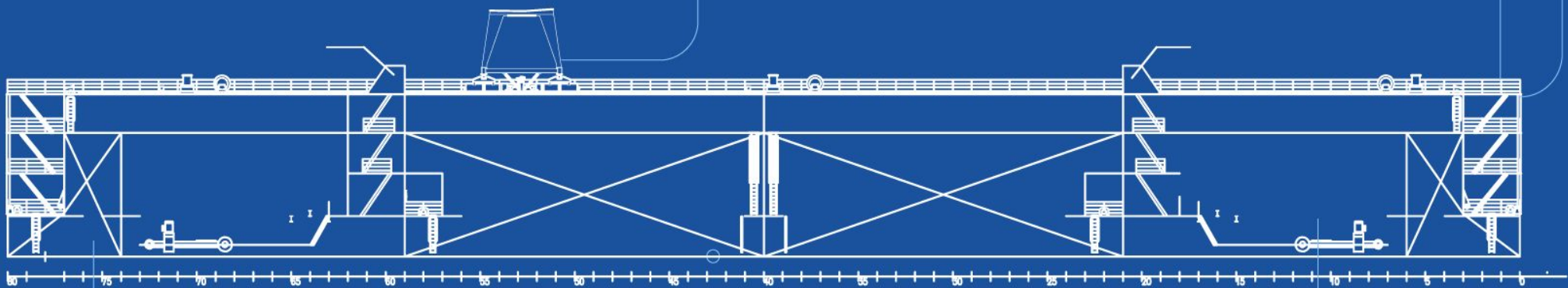
LEFT SIDEWALL ARRANGEMENT

The dock will have ballast compartments and four dry compartments

A flying bridge will be provided on the aft sidewalls, and entrance fenders in the bow

On the top deck: companion to dry compartments

On the safety deck: tween-decks



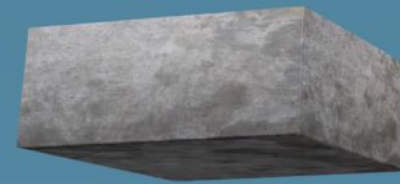
The dry compartments of the left and right side walls will be connected with tunnels. Manifolds and distribution gates will be located in the tunnels

Ballast pumps and fire pumps will be located in the dock's dry compartments

MATERIALS

The floating docks are built according to the original technology, using the main material for the pontoon, marine heavy reinforced concrete based on sulphate-resisting Portland cement and shipbuilding steel for sidewalls

This combination of materials minimizes the cost of operating the floating docks due to the corrosion-resistance of reinforced concrete, while ensuring the reliability and durability of structures



**REINFORCED
FERRO-CONCRETE**



**ALL-STEEL
CONSTRUCTION**



MATERIALS

The use of high-quality Ukrainian materials (sulphate-resisting Portland cement, granite macadam, shipbuilding steel) in combination with hull equipment of leading European manufacturers places these floating docks among the world's top docks successfully operated in many countries around the world and in different climatic zones. Docks are designed for construction, repair and disposal of vessels, ships, submarines with nuclear power plants





**SPETS
TECHNO
EXPORT**

EST. 1998

SPETSTECHNOEXPORT

A major Ukrainian state-owned foreign trade enterprise, which specializes in export and import of military and dual-use products and services globally, as well as on promoting innovations, transfer of technology and military-technical cooperation

OVER

20

years of
experience

30

partner
countries

170

state and private
producers

30

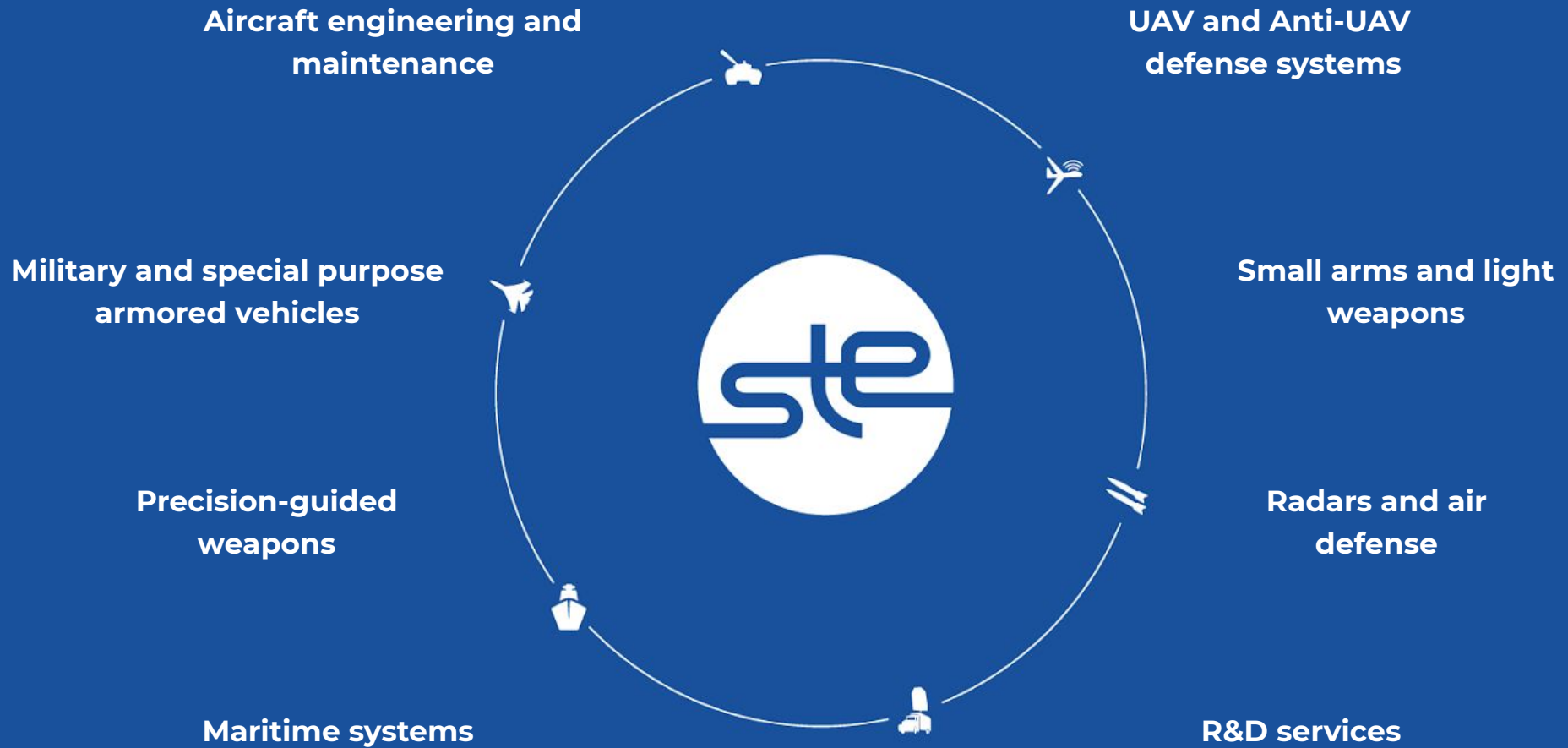
research centers
and design bureaus



UKROBORONPROM

Ukrainian Defence Industry

OUR EXPERTISE





**STATE TRADE FOREIGN ENTERPRISE
SPETSTECHNOEXPORT**

7, Stepana Bandery Avenue, Kyiv, 04073, Ukraine

Tel.: +38 (044) 568 50 70

Fax: +38 (044) 568 53 48

E-mail: office@ste.kiev.ua

www.spetstechnoexport.com